



IMPORTANT: Please take the time to read through the ENTIRE instructions prior to starting any work. Not following the instructions will invalidate the warranty.

Precautions:

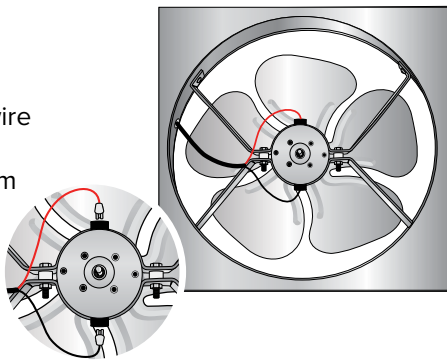
1. Ensure normal safety precautions are taken when using tools, ladder and walking on roofs.
2. Repair only in dry weather.

TOOL NEEDED:

- Philips Head Screwdriver

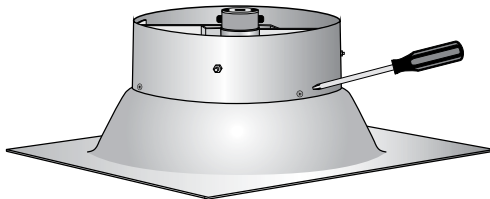
STEP 1

Disconnect the positive (red) wire and negative (black) wire from the motor (see close-up).



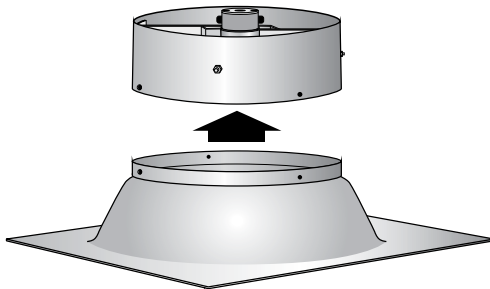
STEP 2

Remove the (4) screws holding the gable fan/motor housing.



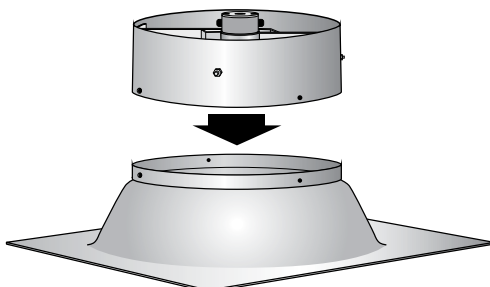
STEP 3

Remove the old gable fan/motor housing.



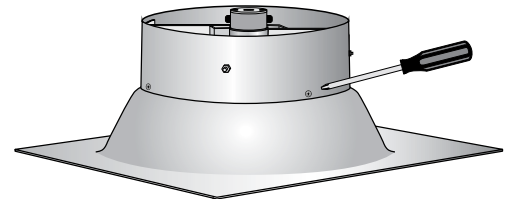
STEP 4

Attach the new gable fan/motor housing over the fan flashing.



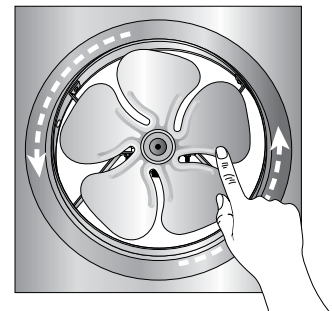
STEP 5

Replace the (4) screws removed in Step 2



STEP 6

To ensure that no damage will be done to the fan blade, spin the blade with your finger and check that the fan spins freely and does not catch on anything.



STEP 7

Reattach the red and black wires to the motor.

